



Touch Chem (M) Sdn Bhd

22, Jalan Anggerik Mokara 31/64,
Kota Kemuning, 40460 Shah Alam,
Selangor Darul Ehsan, Malaysia.

Tel : +603-5121 8802 Fax : +603-5122 1973

Touch OTAL 2030

High efficiency metal pigment affinity polymer to prevent seeding and re-agglomeration of aluminum pigment upon storage.

Properties

Active Ingredient	:	24.5 – 25.5%
Solvents	:	Xylene / Butyl Acetate
Flash Point	:	24°C
Appearance	:	Yellowish liquid
Density	:	0.88 – 0.90 g/cm ³

Description

Touch OTAL 2030 is an acrylic based polymer that have high efficiency metal pigment affinity group to prevent seeding and re-agglomeration of aluminum pigment upon storage.

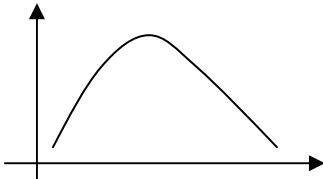


Fig 1: Particles distribution of aluminum paste

As show in figure 1, the particles of aluminum come in a range. Small to medium particles tend to re-agglomerate due to the high polar surface of the aluminum that create an attraction forces to each other. The result from this, some seeding effect will appear when the paint containing aluminum is sprayed.

Touch OTAL 2030 with it high affinity to the metal surface, can wet and prevent those small to medium size aluminum to re-agglomerate after storage.

Touch OTAL 2030 also proven in aluminum paste manufacturing process that by incorporating **Touch OTAL 2030**, the yield of the desire particles size is 20% higher. During the manufacturing process of the aluminum, **Touch OTAL 2030** immediately stabilize the grinded aluminum to prevent them to re-agglomeration and this improve the yield of desire particles tremendously.

Recommended For Use

Touch OTAL 2030 is recommended for non-aqueous system. It can be use in Polyurethane, Acrylic-CAB system, Saturated Polyester-CAB system, straight thermoplastic Acrylic, Stoving Acrylic and Saturated Polyester system and NC.

Touch OTAL 2030 can be incorporated at any stage of production but **ideally** will be after the metallic pigments have been dispersed homogeneously after the incorporation of our other **Touch OTAL series**.

Dosage

5-10% on metallic pigment on delivery form.

Packaging

20kg & 170 kg non-returnable open top metal drum.